



MEETING MINUTES

Helms Elementary School Construction Progress Meeting # 14

Date	Time	Purpose	Location
July 3, 2012	9:30am	Weekly Update	Helms ES, T Building
Prepared By – Tim Beally			
See Attached Attendee List			

1) CMPA/Owner Issues

- a) Whiteboards
 - i) Last week, after the meeting AECOM was informed by a different CMPA that the firm providing the white boards, New Line, went out of business. HIG confirmed this.
 - ii) HIG has contacted two different firms and is pricing the whiteboards. They say they should have an agreement shortly.
- b) Power Outages
 - i) HIG said they may need two or three power outages
 - ii) AECOM said HIG needs to request the outages providing the time, length, area affected and what is the impact on the CCTV, server, and fire alarm systems.
 - iii) HIG said a tentative outage for the north building would be on 07/13/12.
- c) Unit Ventilators
 - i) All new UVs have been hung in the ceiling. LMI is connecting the piping – about 18 so far.
 - ii) AECOM asked HIG to get the electrical service to the UVs run. Also HIG needs to get the UVs connected, and running so the school can be closed and allow custodial work to proceed in the classrooms.
- d) Classroom 6 moisture test – underway.
- e) Light Fixtures
 - i) Have been removed and disposed. HIG is holding the fixture diffusers for HISD CFS.
 - ii) New light fixtures should be delivered shortly.
- f) Electrical Service
 - i) AECOM expressed concern that the electrical work needs to be completed soon.
 - ii) Work is nearing completion in north Building. HIG said that HIG suggested the north Building may be connected shortly.
- g) Marquee - Walked with Atlas Signs and HIG. Atlas Signs will install new marquee next week.
- h) July 5, 6th – School will be available for work.
- i) Revise ADA Parking – AECOM requested HIG complete this work in mid to late July, before the administration returns to school.

2) Architect / Consultants

- a) FGC / JE mentioned concern on some submittals (See below)
- b) See other topical areas.

3) Contractor

- a) Fan Coil Units – some have been delivered. Remainder should be delivered shortly.

4) HAZMAT

- a) Hazmat abatement is done but for the disposal of UVs and light bulbs.
- b) Any future discovery of hazmat will be addressed at that time.

5) Safety

- a) AECOM discussed preparation for a hurricane
 - i) Pick up loose items. Have contents in dumpster removed from the site.
 - ii) Remove or tie down the porta potties
 - iii) Close all windows and doors.
 - iv) May need a temporary generator to service the computer server, fire alarm, and CCTV systems.

- v) AECOM asked the project superintendent to discuss planning for a hurricane with all craft foremen.

6) Schedule

- a) Two week look ahead and the project schedule are attached.
- b) Work underway or planned:
 - i) Restroom demolition is well underway.
 - ii) Plumbing fixtures are being stored in the cafeteria.
 - iii) Light fixtures have been removed and are being stored on site.
 - iv) Electricians are rewiring throughout the school.
 - v) Wire is being pulled for the fire alarm and public address systems.
 - vi) Installation of light fixtures should begin soon. The plant operator wants to start his work in the north building so the lights need to be installed soon.
 - vii) Will pour next week the steps on the east side of the main building.
 - viii) Outside Air Handling Units – may install ducting end of this week or early next week.
 - ix) Continue connecting the UVs to the CW piping.
 - x) Install fire alarm devices next week.

7) Change Proposals Request (CPRs) and Change Orders

- a) See CPR log (attached).
- b) Added two CPRs: 25 and 26.
- c) Plumbing Fixtures
 - i) Previously it was agreed it may be best to replace, rather than reuse, the flush valves.
 - ii) HIG has to get a count and provide a cost for CPR 21. Still pending.
- d) Discussed status of some CPRs
 - i) 8, 10R, 15 – need FGC review
 - ii) 12, 16, 21 – HIG needs to price and submit.
 - iii) 17 – AECOM said LMI needs to provide more documentation to support material costs.
 - iv) 19 – HIG is revising pricing based on comments from ERC.

8) Submittals

- a) Submittal log is attached.
- b) Discussion on specific items:
 - i) HIG needs to resubmit the handrails submittal – third week.
 - ii) AECOM said HIG needs to provide submittals on doors, hardware, window walls, ADA signage (Third week)
 - iii) HIG submitted most of the common, off-the-shelf electrical items. JE will review.

9) Requests for Information (RFIs)

- a) There are no open RFIs.

10) Record Drawings / Permit

- a) HIG is maintaining an as-built set on set.

11) Pay Application

- a) No activity.

12) Site Observations

- a) See attached photos.

Next Meeting – Wednesday, July 11, 2012 at 9:30 AM

These minutes were prepared to accurately report the discussions, issues and decisions made at the above referenced meeting. If any attendee does not agree with the statements made above, please provide corrections in writing within three (3) days of receipt; otherwise, it is deemed all meeting participants are in agreement with the contents.



HOUSTON INDEPENDENT SCHOOL DISTRICT
 Construction Services (Bond Program)
 3500 Tampa Street • Houston, Texas 77021-1244

AECOM

SIGN-IN SHEET HISD BOND PROGRAM

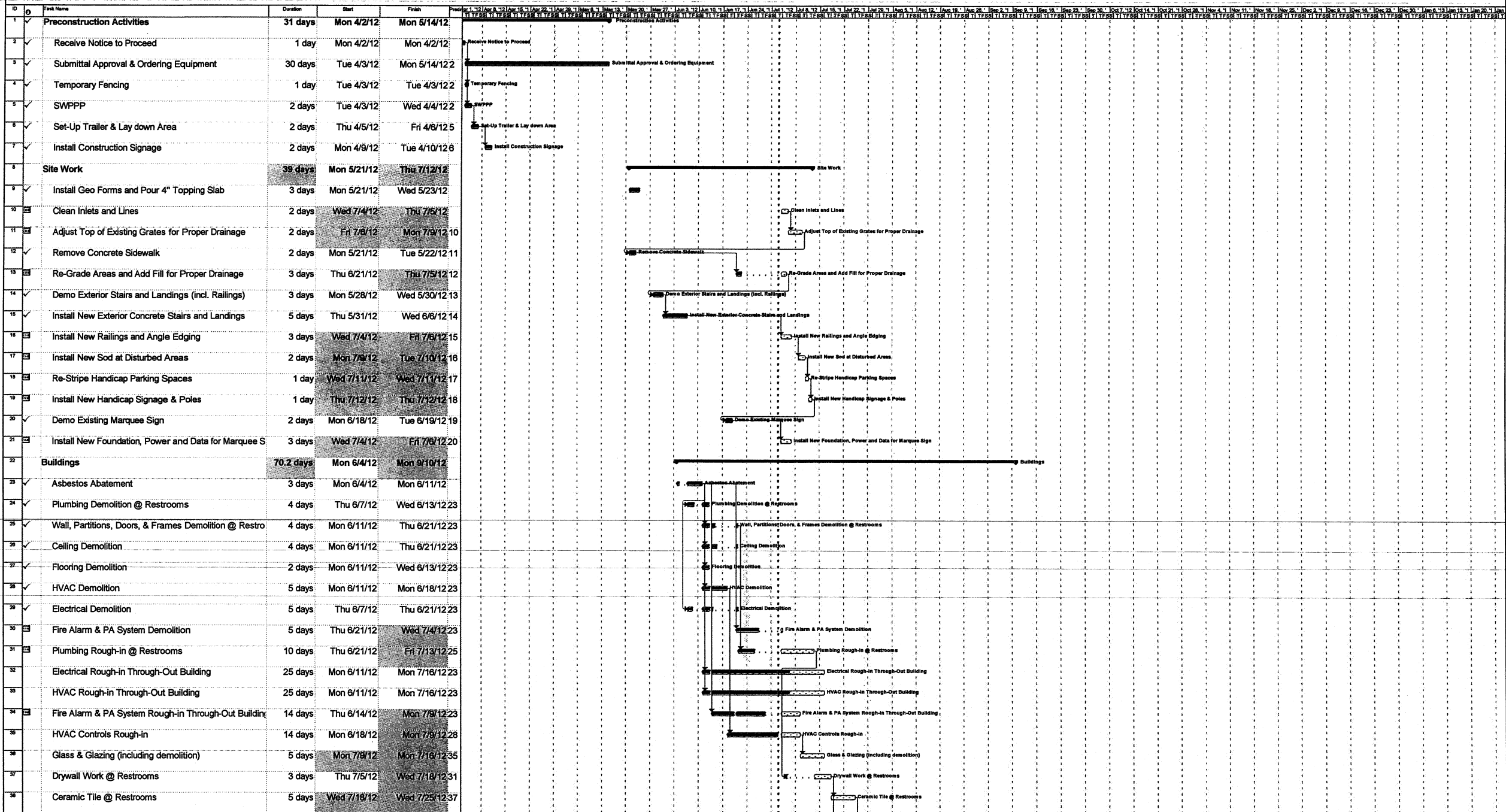
Project: Helms Elementary School Renovation			Meeting Date / Time: July 3, 2012, 9:30 AM		
Meeting Purpose: Construction Meeting 14			Location: Helms ES		
Name	Initial	Title	Company	Phone	Email Address
Tim Beally	<i>TB</i>	PM	AECOM	713-267-3223	Tim.beally@aecom.com
Diana Del Pilar		Principal	HISD – Helms ES	713-867-5130	ddelpila@houstonisd.org
Brian Cox	<i>BMC</i>	Principal	Fehr Grossman Cox	713.797.0404	bcox@fgca.cc
Ron Hughes	<i>RH</i>	Project Manager	Jones Engineers	713-222-7766	rhuhges@jonesengineers.com
Mike Afshar	<i>MA</i>	Project Manager	ERC	713-290-9444	mafshar@erc-tx.com
Russell McCown	<i>RAM</i>	Project Manager	Horizon Intl. Group	832-752-0066	rmccown@hgiusa.com
Gary McMaster	<i>GM</i>	Superintendent	Horizon Intl. Group	281-413-8112	gmcmaster@hgiusa.com
Jim Godke	<i>JG</i>	PM	LMH LLC	713-454-2777	Jim.Godke@lmhllc.com

**HELMS ELEMENTARY SCHOOL
503 WEST 21st STREET
HOUSTON TEXAS 77008**

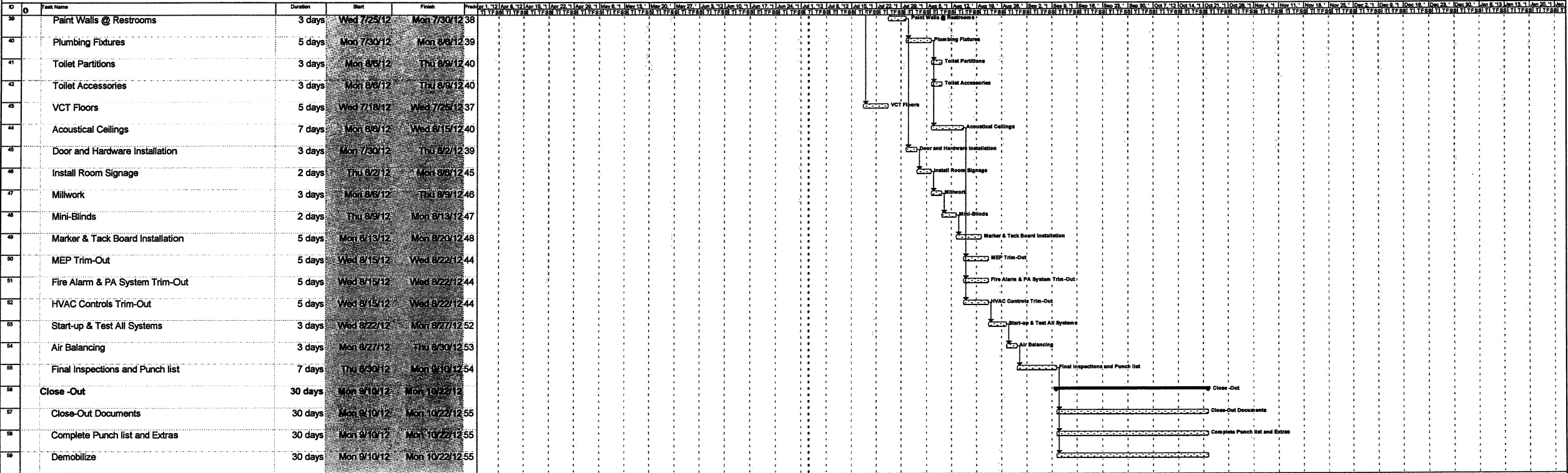
		3																											
CONTRACTOR	ACTIVITY																												
Elite Concrete	Steps & Pads		X			X	X																						
GTS & Associates, Inc.	Landscaping		X			X	X																						
Mustang Remediation																													
	Demo Ceiling Halls& R.R.Walls & Floors	X	X			X	X																						
Unique Plumbing	Start in stalling carriers Restrooms					X	X			X	X	X	X	X				X	X	X	X	X							
LMI Mechanical	Fan Coil Units					X	X			X	X	X	X	X				X	X	X	X	X							
	Piping in Uvs Classrooms	X	X			X	X			X	X	X	X	X				X	X	X	X	X							
	Duct work									X	X	X	X	X				X	X	X	X	X							
K-N-D Electric	Electrical Demo	X	X			X	X			X	X	X	X	X				X	X	X	X	X							
	Conduit Back in Class rooms	X	X			X	X			X	X	X	X	X				X	X	X	X	X							
	New Light Wipes Install Classrooms	X	X			X	X			X	X	X	X	X				X	X	X	X	X							
ABC Construction	Gypsum replacement R.R					X	X			X	X	X	X	X				X	X	X	X	X							
AFS Security	Running Fire Alarm Wire	X	X			X	X			X	X	X	X	X				X	X	X	X	X							
	Put In fire Alam Devices									X	X	X	X	X				X	X	X	X	X							

7/3/2012

Helms Elementary School



Helms Elementary School



Submittal Log and Schedule - Helms Elementary School



Submittal Log and Schedule - Helms Elementary School														
Spec Section		Log of Required Submittals				Schedule		Submittal Distribution			Disposition of Submittal			
		Total Open Submittals												
		Total Submittals in HGT's Office												
Spec Section		Specification Subdivision	Status / Revision	Description	Subcontractor	Date HGT Requested	Date Due	Date Received	Date HGT Sent Out	Engineer / Architect	Date Returned to HGT	Date Returned to Subcontractor	Resubmittal Required	Notes
													Y N	
Division 02 Site Work														
029200 Lawns and Grasses														
		1.4A		Product Data										
029500 Fences & Gates														
		1.4A	Approved	Product Data & Shop Drawings	National Fence	04/09/12	04/09/12	04/09/12	04/10/12	Arch.	4/10/12	4/11/12	N	
Division 03 Concrete														
033000 Cast-In-Place-Concrete														
		1.2C		Design Mixes	Elite	03/30/12	03/30/12	04/02/12	04/02/12	Arch.	4/30/12	5/1/12	N	
		1.2D	As Noted	Reinforcement Shop Drawings	Elite	03/30/12	03/30/12	04/03/12	04/03/12	Arch.	4/5/12	4/6/12	N	
		1.2E		Expanded Polystyrene (EPS) Geofoam	Elite	04/03/12	04/03/12	04/03/12	04/03/12	Arch.	4/5/12	4/6/12	N	
Division 05 Metals														
055213 Pipe and Tube Railings														
		1.4A	R & R	Product Data	Gulf Coast	06/08/12	06/08/12	06/08/12	06/11/12	Arch.	6/19/12	6/19/12	Y	
		1.4B	R & R	Shop Drawings	Gulf Coast	06/08/12	06/08/12	06/08/12	06/11/12	Arch.	6/19/12	6/19/12	Y	
Division 06 Wood and Plastics														
064023 Interior Architectural Woodwork														
		1.4A		Product Data	Xtreme Const									
		1.4C		Shop Drawings	Xtreme Const									
		1.4D		Samples	Xtreme Const									
		1.4E		Product Certificates	Xtreme Const									
Division 07 Thermal And Moisture Protection														
079200 Joint Sealants														
		D.1		Product Data										
		D.2		Samples										
		D.4		Product Certificates										
Division 08 Doors And Windows														
081113 Hollow Metal Doors and Frames														
		1.4A		Product Data	Xtreme Const									
		1.4B		Shop Drawings	Xtreme Const									
		1.4C		Samples	Xtreme Const									
082120 Solid Core Plastic Laminate Faced Doors														
		C.1		Product Data	Xtreme Const									
		C.2		Shop Drawings	Xtreme Const									
		C.3		Samples	Xtreme Const									
084113 Aluminum Storefront														
		D.1		Product Data	Mares Glass	05/17/12	05/17/12	05/17/12	05/18/12	Arch	5/29/12	5/29/12	N	
		D.2		Manufacturer Certification	Mares Glass	05/17/12	05/17/12	05/17/12	05/18/12	Arch	5/29/12	5/29/12	N	
		D.3		Shop Drawings	Mares Glass	05/17/12	05/17/12	05/17/12	05/18/12	Arch	5/29/12	5/29/12	N	

Submittal Log and Schedule - Helms Elementary School




Submittal Log and Schedule - Helms Elementary School														
Spec Section		Log of Required Submittals			Subcontractor	Schedule		Submittal Distribution			Disposition of Submittal			
		Total Open Submittals												
		Total Submittals in HGI's Office												
Spec Section		Specification Subdivision	Status / Revision	Description	Subcontractor	Date HGI Requested	Date Due	Date Received	Date HGI Sent Out	Engineer / Architect	Date Returned to HGI	Date Returned to Subcontractor	Resubmittal Required	Notes
		D.4		Samples for Color Selection	Mares Glass	06/20/12	06/20/12	06/20/12	06/20/12	Arch.	5/29/12	5/29/12		N
		D.5		Samples for verification of Finishes	Mares Glass									
087100 Door Hardware														
		1.4A		Product Data	Xtreme Const	04/30/12	04/30/12	04/30/12	04/30/12	Arch.	5/1/12	5/2/12	Y	
		1.4B		Hardware Schedule	Xtreme Const									
		1.4C		Keying Information	?									
088000 Glazing														
		1.5A		Product Data/Shop Drawings	Mares Glass	05/17/12	05/17/12	05/17/12	05/18/12	Arch	5/29/12	5/29/12		N
		1.5B		Samples of Glass	Mares Glass	05/17/12	05/17/12	05/17/12	05/18/12	Arch	5/29/12	5/29/12		N
		1.5C		Samples of Gaskets	Mares Glass	05/17/12	05/17/12	05/17/12	05/18/12	Arch	5/29/12	5/29/12		N
		1.5D		Manufacturer Certificate	Mares Glass	05/17/12	05/17/12	05/17/12	05/18/12	Arch	5/29/12	5/29/12		N
		1.5F		Sealant Test Reports	Mares Glass	05/17/12	05/17/12	05/17/12	05/18/12	Arch	5/29/12	5/29/12		N
Division 09 - Finishes														
092200 Portland Cement Plaster														
		1.3A		Product Data										
		1.3B		Shop Drawings										
		1.3C		Samples for Initial Selection										
		1.3D		Samples for Verification										
092210 Non-Structural Metal Framing														
		1.3A		Product Data	ABC Const.									
092900 Gypsum Board														
		1.3A		Product Data	ABC Const.									
		1.3B		Samples	ABC Const.									
093100 Ceramic Tile														
		1.5A		Product Data	Bus. Floor Sol.	03/30/12	03/30/12	04/02/12	04/02/12	Arch	4/17/12	4/18/12	Y	Submit Product Samples
		1.5C		Samples for Initial Selection	Bus. Floor Sol.	06/13/12	06/13/12	06/13/12	06/13/12	Arch.				
		1.5D		Samples for Verification	Bus. Floor Sol.	06/13/12	06/13/12	06/13/12	06/13/12	Arch.				
095113 Acoustical Panel Ceilings														
		1.5A		Product Data	ABC Const.									
		1.5C		Samples	ABC Const.									
096516 Resilient Sheet Flooring														
		1.3A		Product Data	Bus. Floor Sol.	03/30/12	03/30/12	04/02/12	04/02/12	Arch	4/17/12	4/18/12	Y	Submit Product Samples
		1.3C		Samples	Bus. Floor Sol.									
096519 Resilient Tile Flooring														
		1.3A		Product Data	Bus. Floor Sol.	03/30/12	03/30/12	04/02/12	04/02/12	Arch	4/17/12	4/18/12	Y	Submit Product Samples
		1.3C		Samples	Bus. Floor Sol.	06/13/12	06/13/12	06/13/12	06/13/12	Arch				
096520 Resilient Base and Accessories														
		1.3a		Product Data	Bus. Floor Sol.	06/13/12	06/13/12	06/13/12	06/13/12	Arch				
		1.3B		Samples	Bus. Floor Sol.	06/13/12	06/13/12	06/13/12	06/13/12	Arch				
099113 Exterior Painting														
		1.3A		Product Data										
		1.3B		Samples										

Submittal Log and Schedule - Helms Elementary School



Submittal Log and Schedule - Helms Elementary School														
Spec Section		Log of Required Submittals			Subcontractor	Schedule		Submittal Distribution			Disposition of Submittal			
		Total Open Submittals												
		Total Submittals in HGI's Office												
Spec Section		Specification Subdivision	Status / Revision	Description	Subcontractor	Date HGI Requested	Date Due	Date Received	Date HGI Sent Out	Engineer / Architect	Date Returned to HGI	Date Returned to Subcontractor	Resubmittal Required	Notes
99123 Interior Painting		1.3C		Product List										
		1.3A		Product Data										
		1.3B		Samples										
		1.3C		Product List										
Division 10 Specialties														
101000 Marker boards and Tack boards														
		1.10	As Noted	Product Data	Newline	04/03/12	04/10/12	04/10/12	04/10/12	Arch.	4/17/12	4/17/12	N	
		1.10	As Noted	Tack Board Color Chart	Newline	04/03/12	04/10/12	04/10/12	04/10/12	Arch.	4/17/12	4/17/12	N	
101550 Toilet Compartments														
		1.3 A	As Noted	Product Data	PBJ Spec.	03/27/12	03/27/12	03/27/12	03/30/12	Arch	4/3/12	4/4/12	N	
		1.3B	As Noted	Shop Drawings	PBJ Spec.	03/27/12	03/27/12	03/27/12	03/30/12	Arch	4/3/12	4/4/12	N	
		1.3C	As Noted	Color Samples	PBJ Spec.	03/27/12	03/27/12	03/27/12	03/30/12	Arch	4/3/12	4/4/12	N	
102800 Toilet Accessories														
		1.2A	As Noted	Product Data	PBJ Spec.	03/27/12	03/27/12	03/27/12	03/28/12	Arch	4/17/12	4/17/12	N	
104410 Interior Unframed Signs														
		1.3B		Product Data	Nova Graphics									
		1.3C		Shop Drawings	Nova Graphics									
		1.3D		Samples	Nova Graphics									
Division 12 - Furnishings														
122113 Horizontal Louver Blinds														
		1.3A	As Noted	Product Data	Capitol Blind	03/30/12	04/04/12	04/04/12	04/25/12	Arch	5/1/12	5/2/12	N	
		1.3B	As Noted	Shop Drawings	Capitol Blind	03/30/12	04/04/12	04/04/12	04/25/12	Arch	5/1/12	5/2/12	N	
		1.3C	As Noted	Color Samples	Capitol Blind	03/30/12	04/04/12	04/04/12	04/25/12	Arch	5/1/12	5/2/12	N	
Division 22 - Plumbing														
22 05 23 General Duty Valves for Plumbing Piping														
		1.4A	Approved	Product Data	Unique Plumb	03/30/12	04/05/12	04/05/12	04/06/12	Eng.	4/10/12	4/10/12	N	
22 05 29 Hangers and Supports for Plumbing Piping and Equipment														
		1.5A	Approved	Product Data	Unique Plumb	03/30/12	04/05/12	04/05/12	04/06/12	Eng.	4/10/12	4/10/12	N	
22 07 19 Plumbing Piping Insulation														
		1.3A	Approved	Product Data	Unique Plumb	03/30/12	04/05/12	04/05/12	04/06/12	Eng.	4/10/12	4/10/12	N	
		1.3D	Approved	Material Test Reports	Unique Plumb	03/30/12	04/05/12	04/05/12	04/06/12	Eng.	4/10/12	4/10/12	N	
22 11 16 Domestic Water Piping														
		1.3A	Approved	Product Data	Unique Plumb	03/30/12	04/05/12	04/05/12	04/06/12	Eng.	4/10/12	4/10/12	N	
22 11 19 Domestic Water Piping Specialties														
		1.4A	As Noted	Product Data	Unique Plumb	03/30/12	04/05/12	04/05/12	04/06/12	Eng.	4/13/12	4/16/12	N	
22 13 16 Sanitary Waste and Vent Piping														
		1.4A	Approved	Product Data	Unique Plumb	03/30/12	04/05/12	04/05/12	04/06/12	Eng.	4/10/12	4/10/12	N	
22 40 00 Plumbing Fixtures														
		1.4A	As Noted	Product Data	Unique Plumb	03/30/12	04/05/12	04/05/12	04/06/12	Eng.	4/13/12	4/16/12	Y	re-submit items requested



Horizon Group
INTERNATIONAL

Submittal Log and Schedule - Helms Elementary School



Spec Section		Log of Required Submittals			Subcontractor	Schedule		Submittal Distribution			Disposition of Submittal				Notes
		Total Open Submittals		Status / Revision		Description	Date HGI Requested	Date Due	Date Received	Date HGI Sent Out	Engineer / Architect	Date Returned to HGI	Date Returned to Subcontractor	Resubmittal Required	
		Total Submittals in HGI's Office													
22 47 0 Drinking Fountains and Water Coolers															
		1.4A	Approved	Product Data	Unique Plumb	03/30/12	04/05/12	04/05/12	04/06/12	Eng.	4/10/12	4/10/12		N	
Division 23 - Mechanical															
23 05 18 Escutcheons for HVAC Piping															
		1.3A		Product Data	LMI										
23 05 19 Meters and Gauges for HVAC Piping															
		1.3A		Product Data	LMI										
23 05 23 General Duty Valves for HVAC Piping															
		1.4A	Approved	Product Data	LMI	06/13/12	06/13/12	06/13/12	06/13/12	Eng.	6/13/12	6/13/12		N	
23 05 29 Hangers and Supports for HVAC Piping & Equipment															
		1.5A		Product Data	LMI	07/03/12	07/03/12	07/03/12	07/03/12	Eng.					
23 05 53 Identification for HVAC Piping & Equipment															
		1.3A		Product Data	LMI										
		1.3B		Equipment Label Schedule	LMI										
23 05 93 Testing, Adjusting, and Balancing for HVAC															
		1.4A	Approved	Qualification Data	LMI										
		1.4B	Approved	Contract Documents Examination Report	LMI										
		1.4D	Approved	Certified TAB Reports	LMI										
		1.4F	Approved	Instrument Calibration Reports	LMI										
23 07 00 HVAC Insulation															
		1.3A	Approved	Product Data	LMI	05/24/12	05/24/12	05/24/12	05/24/12	Eng.	5/31/12	6/7/12		N	
		1.3C	Approved	Material Test Reports	LMI	05/24/12	05/24/12	05/24/12	05/24/12	Eng.	5/31/12	6/7/12		N	
23 07 19 HVAC Piping Insulation															
		1.1	As Noted	Product Data	LMI	05/09/12	05/09/12	05/09/12	05/09/12	Eng.	5/11/12	5/14/12		N	
		1.1 R1	Approved	Product Data	LMI	05/23/12	05/23/12	05/23/12	05/23/12	Eng.	5/31/12	6/7/12		N	
23 09 00 Instrumentation and Control for HVAC															
		1.1A	R & R	Product Data - Valve & Damper	LMI	04/20/12	04/20/12	04/20/12	04/24/12	Eng.	4/24/12	5/1/12	Y		
		1.1A-1	R & R	Product Data - Motor Starter	LMI	04/20/12	04/20/12	04/20/12	04/24/12	Eng.	4/24/12	5/1/12	Y		
		1.1B		Shop Drawings	LMI										
23 09 01 HVAC Lighting Control Integrated with BAS															
		1.1A		Product Data	LMI										
		1.1B		Shop Drawings	LMI										
23 21 13 Hydronic Piping															
		1.5A	Approved	Product Data	LMI	06/13/12	06/13/12	06/13/12	06/13/12	Eng.	6/13/12	6/13/12		N	
		1.5B		Shop Drawings	LMI										
		1.5G		Water Analysis	LMI										
23 21 23 Hydronic Pumps															
		1.4A	Approved	Product Data	LMI	03/30/12	04/06/12	4-5-12	04/06/12	Eng.	4/10/12	4/10/12		N	
23 31 13 Metal Ducts															
		1.4A	Approved	Product Data	LMI	03/14/12	03/21/12	03/21/12	03/22/12	Eng.	3/27/12	3/29/12		N	
		1.4B		Shop Drawings	LMI										
23 33 00 Air Duct Accessories															

Submittal Log and Schedule - Helms Elementary School



Spec Section		Log of Required Submittals			Subcontractor	Schedule	Date HGT Requested	Date Due	Submittal Distribution			Disposition of Submittal				Notes
		Total Open Submittals	Status / Revision	Description					Date Received	Date HGT Sent Out	Engineer / Architect	Date Returned to HGT	Date Returned to Subcontractor	Resubmittal Required		
		Total Submittals in HGT's Office														
		1.3A	Approved	Product Data	LMI	03/14/12	03/21/12	03/21/12	03/22/12	Eng.	3/27/12	3/29/12		N		
		1.3B		Shop Drawings	LMI											
23 34 23 Power Ventilators																
		1.4A	Approved	Product Data	LMI	05/15/12	05/15/12	05/15/12	05/16/12	Eng.	6/13/12	6/13/12		N		
23 37 13 Diffusers, Registers, & Grilles																
		1.3A	Approved	Product Data	LMI	03/14/12	03/21/12	03/21/12	03/22/12	Eng.	3/27/12	3/29/12		N		
23 41 00 Particulate Air Filtration																
		1.3A		Product Data	LMI											
23 74 33 Packaged Outdoor Heating and Cooling Make-up Air Conditioners																
		1.4A	R&R	Product Data	LMI	03/14/12	03/29/12	03/30/12	03/30/12	Eng.	3/30/12	4/2/12	Y			
		1.4A R1	Approved	Product Data	LMI	04/30/12	04/30/12	04/30/12	04/30/12	Eng.	5/1/12	5/1/12		N		
		1.4B	R&R	Shop Drawings	LMI	03/14/12	03/29/12	03/30/12	03/30/12	Eng.	3/30/12	4/2/12	Y			
		1.4B R1	Approved	Shop Drawings	LMI	04/30/12	04/30/12	04/30/12	04/30/12	Eng.	5/1/12	5/1/12		N		
23 82 19 Fan Coil Units																
		1.4A	As Noted	Product Data	LMI	03/14/12	03/29/12	03/29/12	03/29/12	Eng.	4/10/12	4/10/12	Y			
		1.4A R1	As Noted	Product Data	LMI	04/20/12	04/20/12	04/20/12	04/24/12	Eng.	4/27/12	4/27/12	Y		Re-submitt Fcu's 5 & 5A	
		1.4A R2	Approved	Product Data	LMI	04/30/12	04/30/12	04/30/12	04/30/12	Eng.	04/30/12	04/30/12		N		
		1.4B	As Noted	Shop Drawings	LMI	03/14/12	03/29/12	03/29/12	03/29/12	Eng.	4/10/12	4/10/12	Y			
		1.4B R1	As Noted	Shop Drawings	LMI	04/20/12	04/20/12	04/20/12	04/24/12	Eng.	4/27/12	4/27/12	Y		Re-submitt Fcu's 5 & 5A	
		1.4B R2	Approved	Shop Drawings	LMI	04/30/12	04/30/12	04/30/12	04/30/12	Eng.	04/30/12	04/30/12		N		
		1.4C		Color Samples	LMI											
23 82 23 Unit Ventilators																
		1.4A	Approved	Product Data	LMI	03/14/12	03/29/12	03/29/12	03/29/12	Eng.	3/30/12	3/30/12		N		
		1.4B		Shop Drawings	LMI	03/14/12	03/29/12	03/29/12	03/29/12	Eng.	3/30/12	3/30/12		N		
Division 26 Electrical																
260200 Basic Materials & Methods																
		1.07D		Product Data	K-N-D Elect											
26 05 63 Identification for Electrical Systems																
		1.2A		Product Data	K-N-D Elect											
26 05 19 Low Voltage Electrical Power Conductors and Cables																
		1.4A		Product Data	K-N-D Elect	07/02/12	07/02/12	07/02/12	07/02/12	Eng.						
26 05 26 Grounding & Bonding for Electrical Systems																
		1.3A		Product Data	K-N-D Elect											
26 05 29 Hangers & Supports for Electrical Systems																
		1.5A		Product Data	K-N-D Elect	07/02/12	07/02/12	07/02/12	07/02/12	Eng.						
26 05 33 Raceway & Boxes for Electrical Systems																
		1.4A		Product Data	K-N-D Elect	07/02/12	07/02/12	07/02/12	07/02/12	Eng.						
26 09 24 Electrical Lighting Control Integrated with BAS																
		1.1E		Shop Drawings	K-N-D Elect	07/02/12	07/02/12	07/02/12	07/02/12	Eng.						
26 24 16 Panel boards																
		1.5A	As Noted	Product Data	K-N-D Elect	04/05/12	04/05/12	04/20/12	04/25/12	Eng.	4/26/12	4/27/12		N		
		1.5B		Qualification Data	K-N-D Elect	04/05/12	04/05/12	04/20/12	04/25/12	Eng.	4/26/12	4/27/12		N		

Submittal Log and Schedule - Helms Elementary School



		Log of Required Submittals				Schedule	Submittal Distribution	Disposition of Submittal							Horizon Group INTERNATIONAL
		Total Open Submittals													
		Total Submittals in HGI's Office													
Spec Section		Specification Subdivision	Status / Revision	Description	Subcontractor	Date HGI Requested	Date Due	Date Received	Date HGI Sent Out	Engineer / Architect	Date Returned to HGI	Date Returned to Subcontractor	Resubmittal Required		Notes
		1.5C		Field Quality Control Reports	K-N-D Elect	04/05/12	04/05/12	04/20/12	04/25/12	Eng.	4/26/12	4/27/12		N	
		1.5D	As Noted	Panel board Schedules	K-N-D Elect	04/05/12	04/05/12	04/20/12	04/25/12	Eng.	4/26/12	4/27/12		N	
26 27 26 Wiring Devices															
		1.4A		Product Data	K-N-D Elect	07/02/12	07/02/12	07/02/12	07/02/12	Eng.					
26 28 16 Enclosed Switches & Circuit Breakers															
		1.5A		Product Data	K-N-D Elect	07/02/12	07/02/12	07/02/12	07/02/12	Eng.					
		1.5B		Field Quality Control Reports	K-N-D Elect	07/02/12	07/02/12	07/02/12	07/02/12	Eng.					
		1.5C		Manufacturers Field Service Report	K-N-D Elect	07/02/12	07/02/12	07/02/12	07/02/12	Eng.					
26 51 00 Interior Lighting															
		1.3A	As Noted	Product Data	K-N-D Elect	04/06/12	04/06/12	04/06/12	04/09/12	Eng.	4/10/12	4/10/12		N	
		1.3B	As Noted	Installation Instructions	K-N-D Elect	04/06/12	04/06/12	04/06/12	04/09/12	Eng.	4/10/12	4/10/12		N	
		1.3C	As Noted	Qualification Data	K-N-D Elect	04/06/12	04/06/12	04/06/12	04/09/12	Eng.	4/10/12	4/10/12		N	
		1.3D	As Noted	Product Certificates	K-N-D Elect	04/06/12	04/06/12	04/06/12	04/09/12	Eng.	4/10/12	4/10/12		N	
		1.3E	As Noted	Field Quality Control Reports	K-N-D Elect	04/06/12	04/06/12	04/06/12	04/09/12	Eng.	4/10/12	4/10/12		N	
26 56 00 Exterior Lighting															
		1.5A	As Noted	Product Data	K-N-D Elect	04/06/12	04/06/12	04/06/12	04/09/12	Eng.	4/10/12	4/10/12		N	
		1.5E	As Noted	Qualification Data	K-N-D Elect	04/06/12	04/06/12	04/06/12	04/09/12	Eng.	4/10/12	4/10/12		N	
		1.5F	As Noted	Field Quality Reports	K-N-D Elect	04/06/12	04/06/12	04/06/12	04/09/12	Eng.	4/10/12	4/10/12		N	
Division 27 - Communications															
27 51 00 Intercom															
		1.1	Approved	Product Data - Shop Drawings	Convergint	06/20/12	06/20/12	06/20/12	06/20/12	Eng.	6/21/12	6/22/12		N	
Division 28 - Electronic Safety And Security															
28 31 11 Digital Addressable Fire Alarm System															
		1.4A	Approved	Product Data	AFS	05/09/12	05/09/12	05/09/12	05/09/12	Eng.	5/17/12	5/18/12		N	
		1.4B	Approved	Shop Drawings	AFS	05/09/12	05/09/12	05/09/12	05/09/12	Eng.	5/17/12	5/18/12		N	
		1.4C	Approved	Suppliers Qualifications	AFS	05/09/12	05/09/12	05/09/12	05/09/12	Eng.	5/17/12	5/18/12		N	
		1.4D		Hourly Service Rate Schedule	AFS										
		1.4E		O&M Manuals - Close Out	AFS										
		1.4F		Warranty - Close Out	AFS										

\$54,382.82	0	\$44,712.72	\$0.00	0
-------------	---	-------------	--------	---

Helms ES Renovation - Change Log

CPRs on Hold, Cancelled or Done Through Alternative Means

[illegible]

